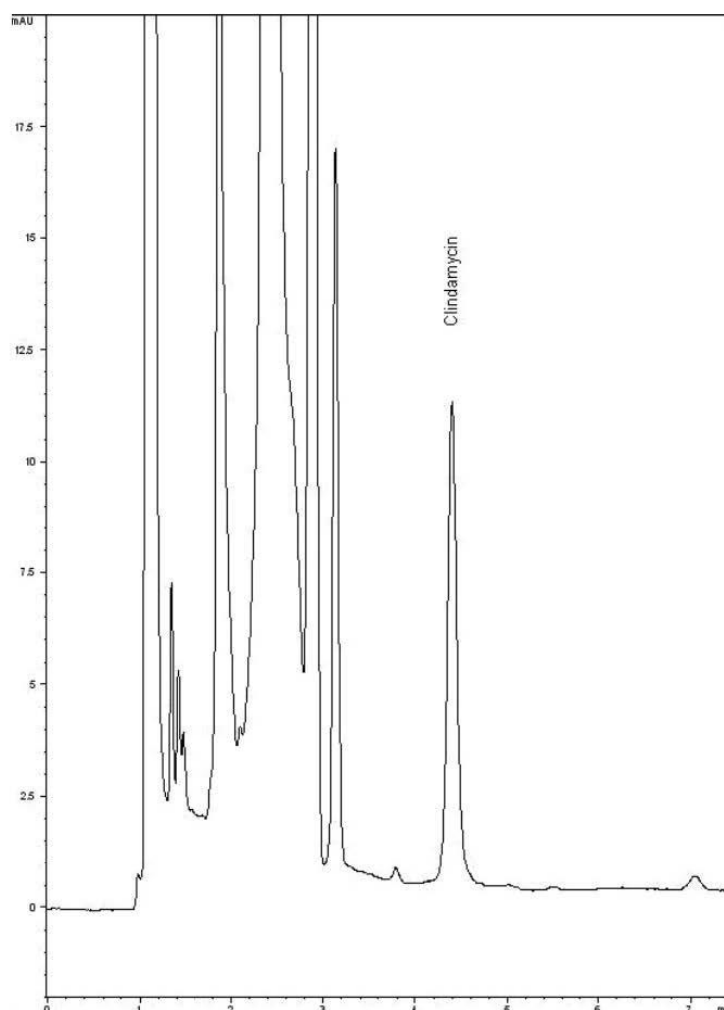


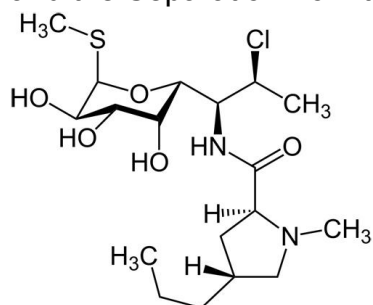
## Clindamycin Antibiotic Tablet Analyzed with HPLC - AppNote

### Separation of API from Excipients

The Stability and Robustness of this Method makes it an excellent choice for QC of this semi-synthetic antibiotic which is structurally related to Lincomycin. The Chromatogram shown below of Clindamycin is from a complex Pharmaceutical Formulation but note the excellent Peak Shape for it



and the Separation from the Excipients.



**Peak:**

Clindamycin

## Method Conditions

**Column:** Cogent Bidentate C18™, 4µm, 100Å

**Catalog No.:** [40008-15P](#)

**Dimensions:** 4.6 x 150mm

**Mobile Phase:** 40:60 Acetonitrile / 10mM Phosphate Buffer pH 7.5

**Temperature:** 25°C

**Injection vol.:** 20µL

**Flow rate:** 1.0mL / minute

**Detection:** UV @ 338nm

**Notes:** Normally used to treat infections with anaerobic bacteria, this drug is indicated for use against Protozoal diseases such as Malaria. Also used for Acne can be useful against some MRSA infections. Clindamycin is marketed under various trade names including Dalacin, Cleocin, Evoclin and Duac as well in generic form. Molecular Weight of the Clindamycin is 424.99 with a pKa of 7.6 and is soluble in Water, Pyridine, Ethanol and DMF.

If you use the Phosphate Buffer on the Bidentate C8 Column, you should dedicate the Column to use with Phosphates in the Mobile Phase.



## Attachment

**No 71Clindamycin Antibiotic Tablet Analyzed with HPLC pdf 0.2 Mb** [Download File](#)

Printed from the Chrom Resource Center

Copyright 2025, All Rights Apply

**MicroSolv Technology Corporation**

9158 Industrial Blvd. NE, Leland, NC 28451

Tel: (732) 380-8900

Fax: (910) 769-9435

Email: [customers@mtc-usa.com](mailto:customers@mtc-usa.com)

Website: [www.mtc-usa.com](http://www.mtc-usa.com)